

Oferen an Dasserghyans

Arlodh

Kyrie, Lord.

♩=74

Musical score for the first system. It consists of a vocal line and a piano accompaniment. The key signature is D major (two sharps) and the time signature is 3/4. The tempo is marked as ♩=74. The piano part features a right-hand (RH) optional line with a dynamic marking of *mf* and a triplet of eighth notes. The bass line provides a steady accompaniment.

5

D
mp

D

Bm

D

Ar - lodh, kem-mer tre - ge redh, Krist, kem-mer tre - ge redh,

Musical score for the second system. It continues the vocal line and piano accompaniment. The key signature remains D major and the time signature is 3/4. The piano part features a right-hand (RH) optional line with a dynamic marking of *mp* and a triplet of eighth notes. The bass line continues the accompaniment.

9

D
mf

G

F#m

G

D

Bm

D

A

Ar lodh, kem - mer tre - ge - redh.

Musical score for the third system. It concludes the vocal line and piano accompaniment. The key signature remains D major and the time signature is 3/4. The piano part features a right-hand (RH) optional line with a dynamic marking of *mf*. The bass line continues the accompaniment.

13 *mf* **A** **D** **A**

Ar lodh, kem-mer tre - ge redh, Krist, kem-mer tre-

The ossia bars give extra support to the vocal line if required.

16 **D** **G** **D A Bm G** **D A D**

ge redh, Ar lodh, Ar lodh, kem-mer tre-ge redh.

Gordhyans

Gloria, Glory.

$\text{♩} = 90$

Aeolian Mode
f maestoso

9

f maestoso Dm A⁵ Dm Am Am F

Gor-dhyans re bo dhe Dhuw y'n u - ghel - der, ___ hag y'n nor

18

C Dm Am⁷ B \flat C Dm Dm

mp $\text{♩} = 108$ C F C B \flat F

kres, dhe bo-bel a vo - lon - jedh da. ___ Ni a'th prays, Ni ___ a'th ___

mp $\text{♩} = 108$ Mixolydian Mode *leggiere*

26 C G C F C B \flat F C C Gm C B \flat

ve nyk, Ni a'th wordh, Ni a'th wor mel, Ni a wor gras dhis a'th wor - dhyans

34 C *mf* C B \flat Dm B \flat F C Gm C Dm C Am

mf

meur, A Ar - lodh Duw, Mygh - tern Nev, Duw, an Tas Oll-gal-

41 B \flat C Gm **B** C Gm C B \flat F C C Gm

f

lo - sek. A Ar - lodh, an Unn Vab, Ye - su

48 C B \flat F C Gm C Gm C B \flat C

Krist, A Ar - lodh Duw, On Duw, Mab an Tas,

85 Dm Bb Am F C F C Bb C Dm

yw an Hu - ni Sans, Ty yn un - sel yw an Ar lodh.

93 Dm Am Dm Bb Am F C F C Bb F

Ty yn un - sel yw an u - ghel la, Ye - su Krist, Gans an Spy - rys

101 C Am Dm C Bb C Dm rit. C Dm Dm

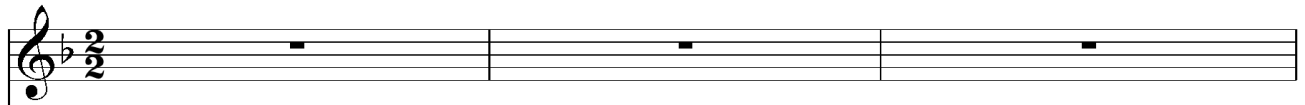
Sans, Yn gor - dhyans Duw an Tas. A - men

Intentionally blank

Gwarnyans an Aweyl

Acclamations Evangelium, Gospel Acclamations.

♩=66



♩=66

Aeolian Mode

Dm Gm Dm Dm Am Gm C

Al - le lu - ya, Al le lu ya.

An lewydh a lever an gwarnyans.

♩=66

Dm
f

Gm

Dm

Dm

C

Dm

Al - le lu - ya, Al le lu ya.

♩=66

Sans

Sanctus, Holy.

♩=48

Dm *mp* F C

♩=48

Dm Dorian Mode Am

mp

Sans, Sans, — Sans — os,

5 D Am Dm Am Dm

Ar - lodh Duw lu - yow, Nev ha nor yw leun a'th

8 F G Am

wor - dhyans. Ho - san - na — y'n u - ghel - der, Be —

11 Am G Am Dm

ny - ges yw neb a dheu yn ha - now an

14 Am Dm F Dm *f* *mf*

Ar - lodh, Ho - san - na y'n u - ghel - der. Ho

17 Dm Am⁷ Dm

san - na y'n u - ghel - der.

Mysteri Fydh

Mysterium Fidei, Mystery of Faith.

$\text{♩} = 60$ Dm C Dm
mf

$\text{♩} = 60$ Dorian Mode
Dm C Dm C Dm C B \flat C Krist re__ ver__ wis,

7 B \flat F B \flat Dm B \flat C Dm C
Krist yw__ se-vys, Ar__ ta__ Krist, ar-ta Krist a - dheu.

13 Dm C Dm B \flat F C
Krist__ re__ ver__ wis, Krist yw__ se - vys, Ar__ ta__

18 Dm Dm C Dm C Dm *rit.*
Krist, ar-ta Krist a - dheu. *rit.*
B \flat C Dm

Amen Veur

Amen Magna, Great Amen.

$\text{♩} = 66$ *f* Dm Gm Dm

A - men, A - men,

5 Gm C Dm Gm

A - - men, A - men, A -

Ped.

8 Dm C Dm

men, A - - men.

On Duw

Agnus Dei, Lamb of God.

♩=96

C *p* C F

A On Duw, neb a

♩=96 RH optional

6 C B \flat C B \flat C B \flat C

dhi le pe_ gho_sow an bys, Kem-mer tre - ge - redh a - ha - nan._

12 C *mp* F C F C B \flat C

A On Duw, neb a dhi_ le pe_ gho_sow an bys,

17 B \flat F B \flat C C *p*

Kem - mer tre - ge - redh a - ha - nan. *A*

21 C F C B \flat C Gm F

On Duw, neb a dhi_ le pe_ gho_ sow an bys, Ro_ dhyn ni

26 Dm B \flat C *rit.* Gm C *pp*

kres, Ro_ dhyn ni kres. *rit.* *pp*